

A hand-drawn rectangle with a black outline, centered on the page. Inside the rectangle, the word "address" is written in a cursive script.

address

<https://www.bbc.co.uk/learningenglish/english/course/emw/unit-1/session-5>



Today, Samina plans to visit her friend Muna.
First, she calls Muna.



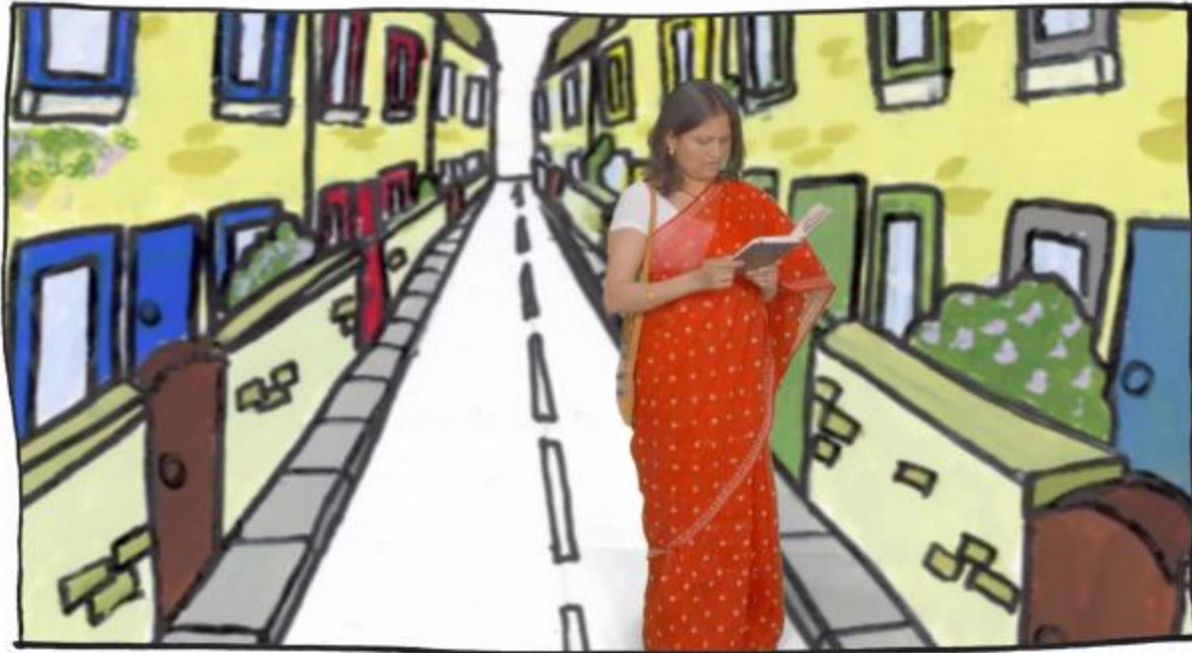
"So, do you have my address?" Muna asks.



"Yes," Samina says, "I have it here. 15 Leonard Street."



"That's right," Muna says, "See you at three o'clock."
"See you later," Samina says.



Samina starts walking to Muna's house.
She has the address in her book.



She looks at the street signs. The sign says "London Road."
That's not right.



She looks at the other street signs. The sign says "Long Street."
That's also not right.



Oh no! Samina is lost.



Where is 15 Leonard Street?



Samina sees a woman on the street.
"Excuse me," Samina says, "Can you help me? I'm lost."



"Of course," the woman says, "Where do you want to go?"



"I'm looking for Leonard Street," Samina says, "How do I get there?"



"Leonard Street?" the woman says, "Go past the post office. Cross the road. Then turn right."



Samina wants to make sure she understood. She asks,
"Go past the post office, cross the road and then turn
right?"



"Yes," the woman answers, "Then you'll be on Leonard Street."



"Thank you so much," Samina says, and goes to find Muna.