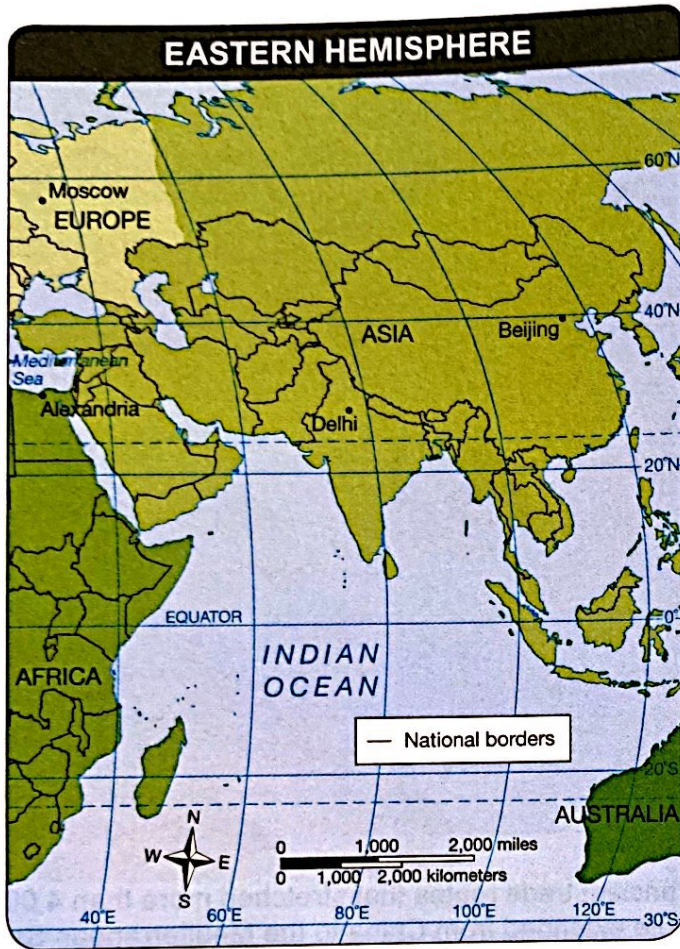


Unit 1 Review

DIRECTIONS: Study the map, read each question, then choose the **best** answer.



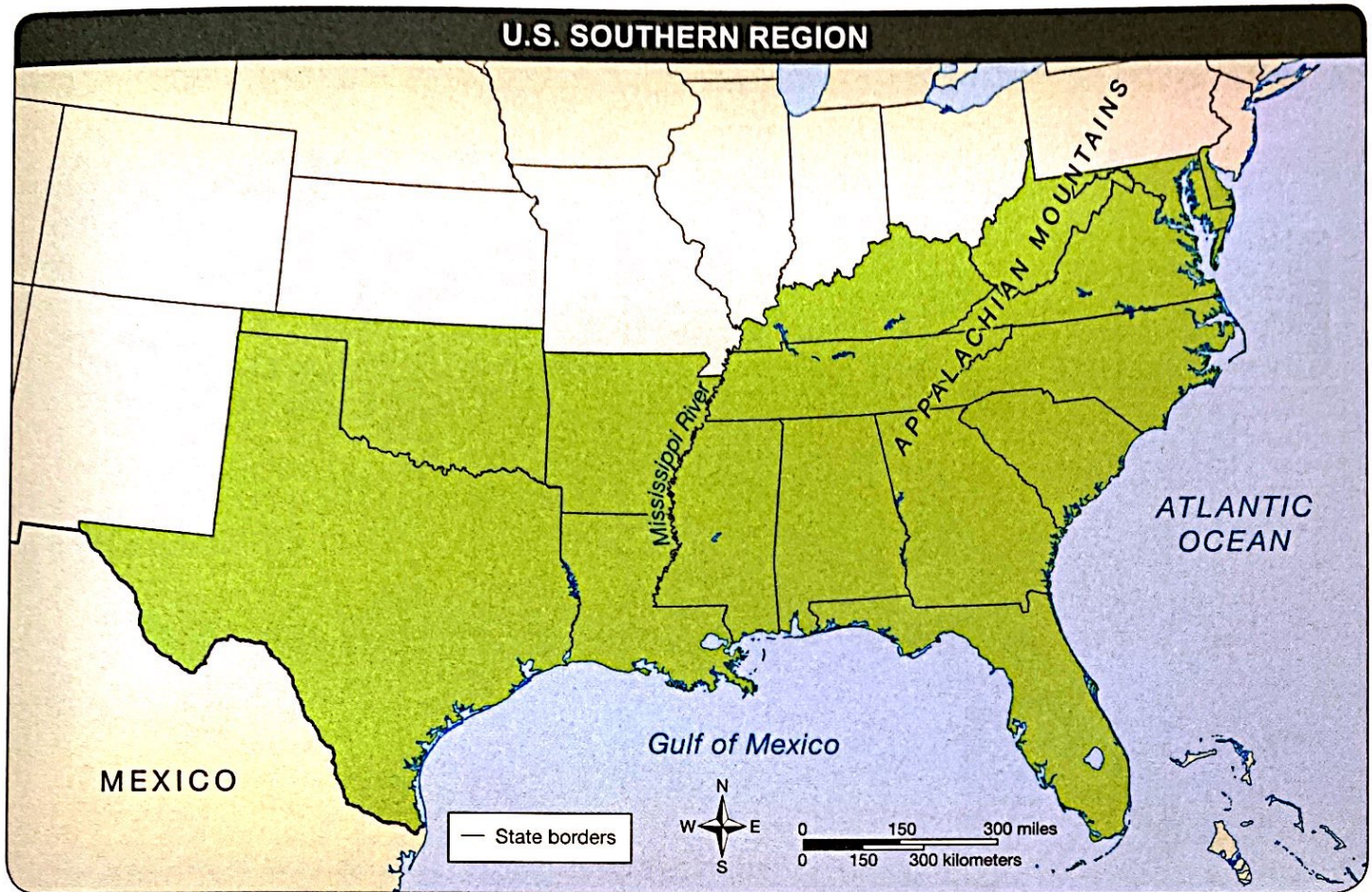
- Based on information on the map, what is the relative location of Beijing, China?
 - west of Moscow
 - northeast of Delhi
 - 40°N, 80°E
 - 40°S, 80°W
- What tool could you use to find the absolute location of a place?
 - a map scale
 - a map key
 - map symbols
 - latitude and longitude
- Which continent falls fully within the Southern Hemisphere?
 - Africa
 - Asia
 - Australia
 - Europe

DIRECTIONS: Study the map, read each question, then choose the **best** answer.



- Based on information on the map, which of the following statements is accurate?
 - Settlements were mostly in the interior of the Ohio territory.
 - Settlements fell mostly along Lake Erie.
 - Portsmouth was the westernmost settlement.
 - Settlements were built along waterways.
- Soon after which historical event were most of the settlements in the Ohio Territory founded?
 - the American Revolution
 - the French and Indian War
 - the War of 1812
 - the Civil War
- Which of the following settlements was founded after all of the others?
 - Cleveland
 - Portsmouth
 - Chillicothe
 - Zanesville

DIRECTIONS: Study the map, read each question, then choose the **best** answer.



7. Based on the map, which of the following statements is accurate?
- A. The U.S. Southern region includes all states east of the Mississippi River.
 - B. The U.S. Southern region includes Virginia, but not West Virginia.
 - C. The U.S. Southern region includes all states that feature the Appalachian Mountains.
 - D. The U.S. Southern region includes all states that border the Gulf of Mexico.
8. Which of the following cities is located in the U.S. Southern region?
- A. Nashville
 - B. Cincinnati
 - C. St. Louis
 - D. Wichita
9. Which of the following states borders a state in the U.S. southern region?
- A. Iowa
 - B. Pennsylvania
 - C. Colorado
 - D. Michigan
10. About how far away are east Texas and west South Carolina?
- A. about 300 miles
 - B. about 500 miles
 - C. about 700 miles
 - D. about 900 miles
11. Which Southern state shares a border with seven other states in the Southern region?
- A. Arkansas
 - B. Georgia
 - C. Mississippi
 - D. Tennessee
12. Which of the following is true about the Southern region?
- A. West Virginia is the smallest state in the region.
 - B. Most of the states border either the Atlantic Ocean or the Mississippi River.
 - C. The states in the region also formed the Confederacy in the Civil War.
 - D. The Southern Region occupies approximately half the land area of the United States.

DIRECTIONS: Study the map, the passage, and read the questions. Then mark on the map the best answer(s) to each question.



On January 1, 2012, the majority (86%) of people in Canada lived in Ontario, Quebec, British Columbia, and Alberta. Between 1992 and 2012, the percentage of Canada's population living in Ontario, Alberta, and British Columbia increased, while the percentage living in all other provinces declined. The population in the territories remained stable.

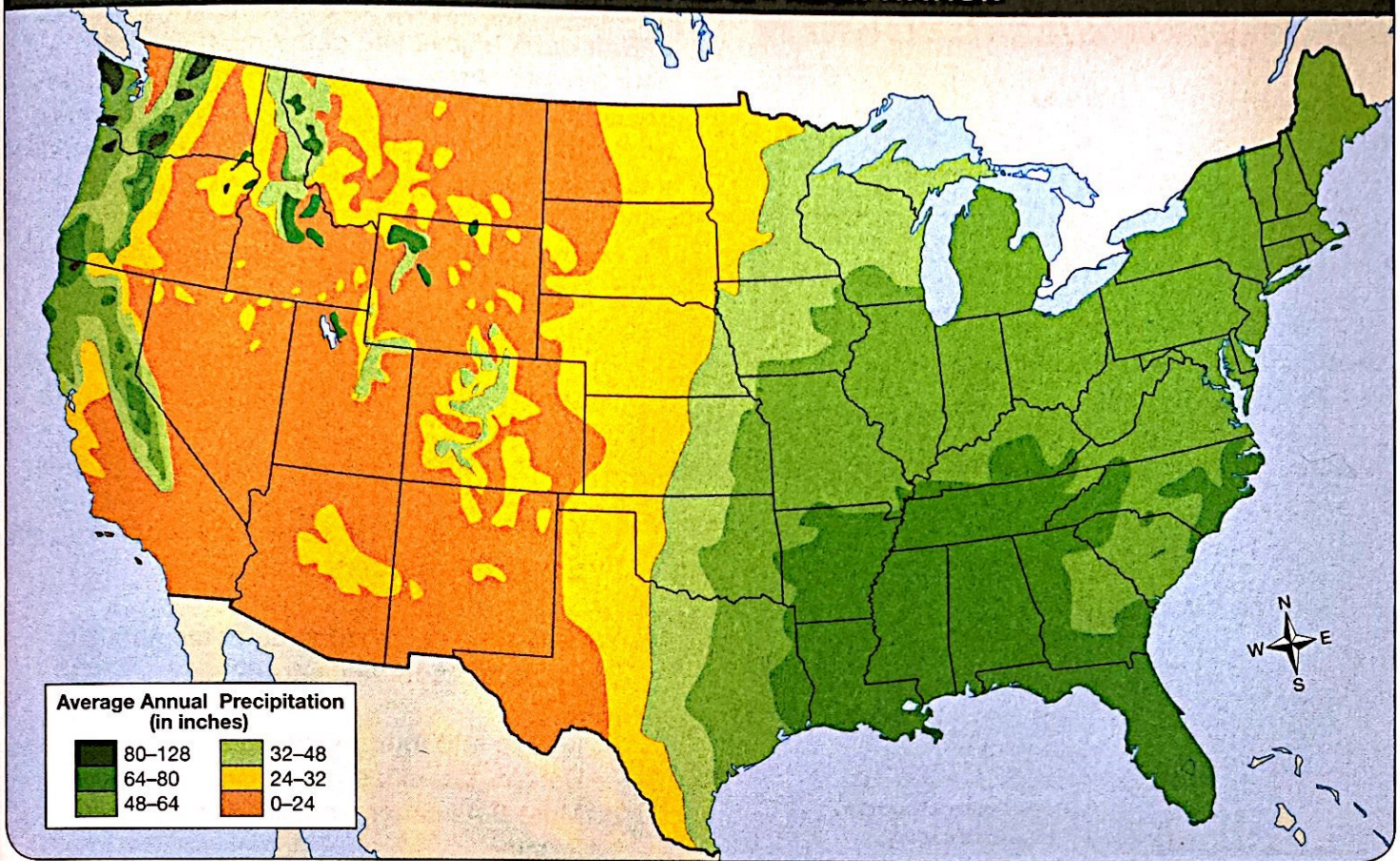
The proportion of Canadians who live in urban areas has increased steadily since it gained its independence from Great Britain. In 2011, more than 27 million Canadians (81%) lived in urban areas, a reversal from more than a century ago. Also in 2011, the three large urban areas in Canada—Toronto, Vancouver, and Montréal—made up just more than a third (35%) of Canada's entire population.

The urban-rural distribution was uneven across the provinces and territories. Ontario, British Columbia, and Alberta all had populations with urban proportions higher than the national level. Conversely, some provinces and territories had rural populations significantly higher than the national average, ranging from 28% in Manitoba to 53% in Prince Edward Island.

13. Where is most of Canada's population located? Circle the area on the map.
14. On the map, place a check mark beside the name of a city in the Nunavut Province.
15. On the map, underline the names of provinces that share a border with the United States.
16. Which Canadian province is the farthest north: Yukon, Ontario, Quebec, or British Columbia? Place an **X** next to a name of that province.
17. On the map, place a double-underline beneath the name of the city whose absolute location is closest to 60°N, 120°W.
18. On the map, place a star symbol next to Canada's largest inland waterway.
19. On the map, place two star symbols next to two of the provinces that were home to rural populations that were much higher than the national average.

DIRECTIONS: Study the map and the passage, read each question, then choose the **best** answer.

U.S. AVERAGE ANNUAL PRECIPITATION



Even though the United States is a large country, it features many different types of climates. The average annual precipitation, including rainfall and snowfall, is one way to view those differences.

Rain forms when small cloud drops become too heavy for the cloud, thus falling toward Earth as rain. Rain can also begin as ice crystals that collect and form large snowflakes. As the snow falls toward Earth through warmer air, the flakes melt and collapse into raindrops. Snowflakes are clumps of ice crystals that collect as they fall toward Earth. Since snowflakes do not fall through a layer of air warm enough to cause them to melt, they remain intact and reach the ground as snow.

20. Based on the map and the passage, which of the following states has the lowest annual precipitation?

- A. Idaho
- B. Nevada
- C. Texas
- D. Arizona

21. Which area of the United States probably has the most diverse climate?

- A. the Pacific Coast
- B. the Atlantic Coast
- C. the Midwest
- D. the Northeast

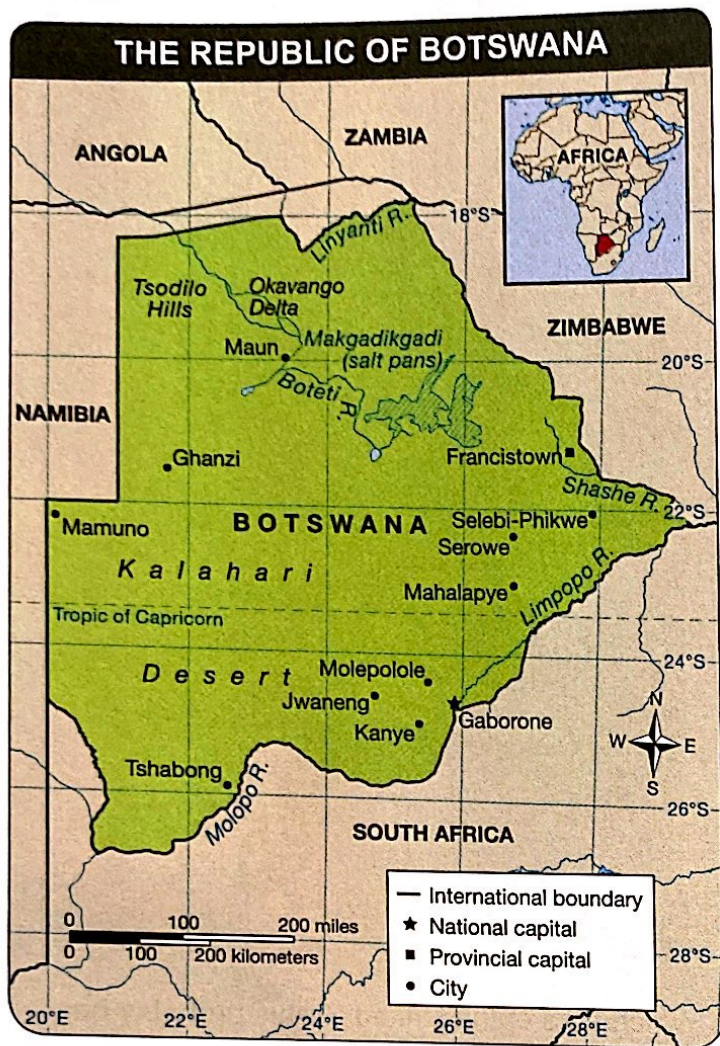
22. Which of the following states receives between 0 and 128 inches in annual precipitation?

- A. New Mexico
- B. California
- C. Colorado
- D. Wisconsin

23. Which of the following states has the highest annual precipitation?

- A. Florida
- B. Kansas
- C. North Dakota
- D. West Virginia

DIRECTIONS: Study the map and the passage, read each question, then choose the **best** answer.



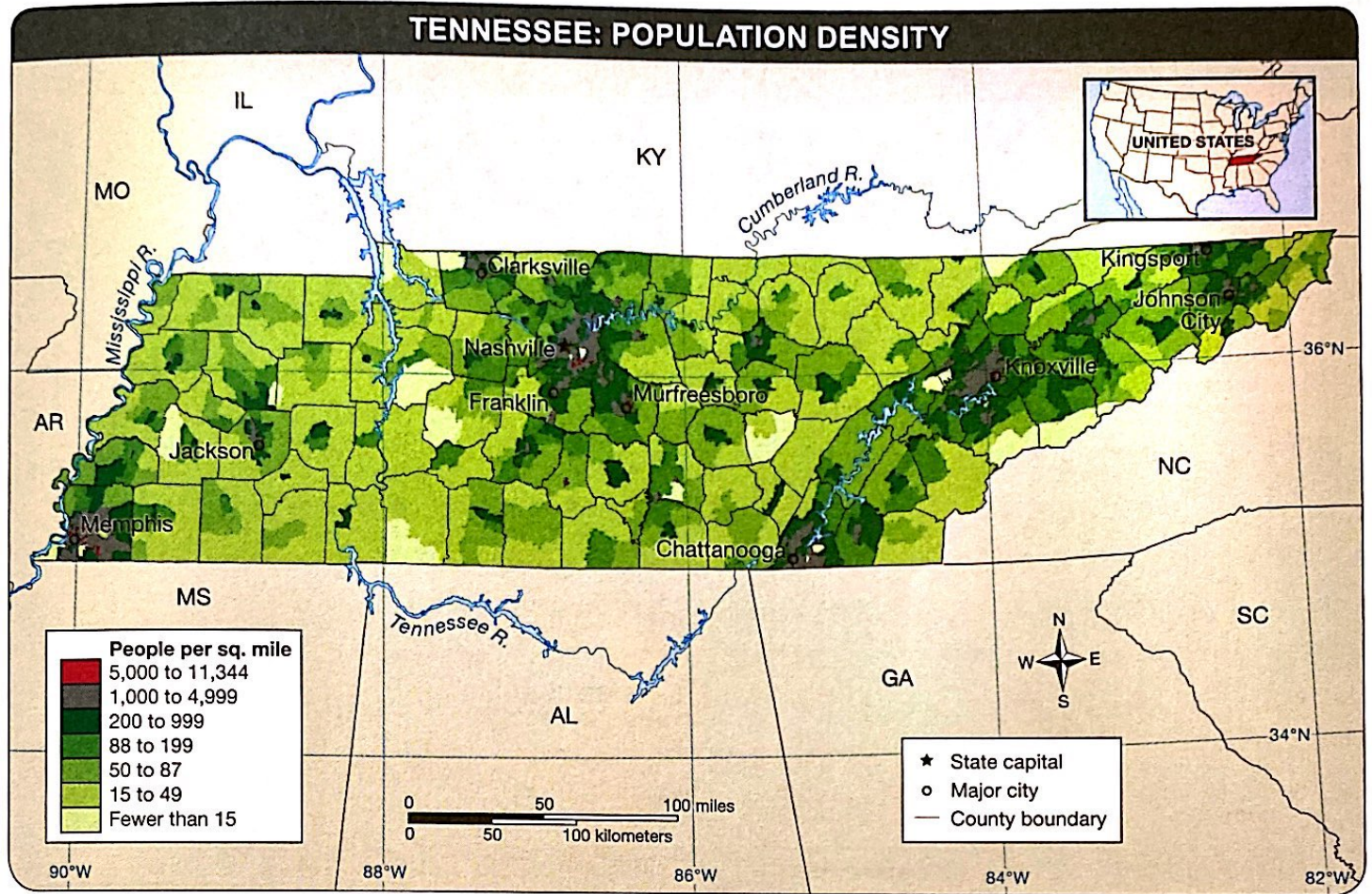
The Republic of Botswana is a country in southern Africa that is slightly smaller than the state of Texas and about the same size as France or Kenya. Most of landlocked Botswana is characterized by vast and nearly level sandy basins and scrub-covered savannah. The Kalahari Desert in the southwest makes up much of the country. Botswana's sparse population is concentrated in the eastern part of the country. Most areas are too arid to sustain any agriculture other than cattle.

Botswana experiences extremes in both temperature and weather. Winter days (late May through August) are normally clear, warm, and sunny, and nights are cool to cold. In summer (October to April), rains can render the country's mostly sandy roads impassable. This is also the time of the most humidity and stifling heat. During the long days, temperatures of more than 105°F are common.

A former British colony, Botswana gained its independence in 1966. With almost 50 years of civilian leadership, progressive social policies, and significant capital investments, the Republic of Botswana enjoys one of the most dynamic economies in Africa. Diamond mining dominates the country's economic activity, but Botswana is becoming a tourist destination due to its extensive nature preserves and conservation practices.

24. Based on the map and the passage, what can you assume about Botswana?
 - A. The Kalahari Desert is sparsely populated.
 - B. Botswana's cities are all located along its waterways.
 - C. Most of Botswana's cities are located near the salt pans.
 - D. Most of Botswana's cities are located south of the Tropic of Capricorn.
25. Which of the following statements about Botswana's economy is true?
 - A. Mining and tourism provide income for Botswana's citizens.
 - B. Most Botswanans make their living from farming.
 - C. Botswana has a failing economy.
 - D. There are no tourist attractions to help support Botswana's economy.
26. Which of the following cities in Botswana is the capital?
 - A. Mamuno
 - B. Francistown
 - C. Mahalapye
 - D. Gaborone
27. Traveling west from Mamuno, into which African country would you enter?
 - A. Angola
 - B. Zimbabwe
 - C. South Africa
 - D. Namibia

DIRECTIONS: Study the map and the passage, read each question, then choose the **best** answer.



Tennessee is located in the Southern region of the United States. It is the seventeenth most populous state in the United States.

The 2010 Census recorded Tennessee's population at 6,346,106 inhabitants, an increase of more than 650,000 people since 2000.

28. Based on the map and the passage, why might there be a large area of population density near the center of the state?

- A. All of Tennessee's major cities are centrally located.
- B. The Appalachian Mountains are located in the central part of the state.
- C. Nashville is located in this area.
- D. Chattanooga is located in this area.

29. Which of the following states shares a border with Tennessee and also with South Carolina?

- A. Georgia
- B. Alabama
- C. Virginia
- D. Florida

30. Based on the map, which area of the state has the lowest population density?

- A. between the counties northeast of Chattanooga and southwest of Knoxville
- B. between the counties west and southwest of Clarksville and northeast and southeast of Jackson
- C. the counties located around Nashville
- D. the counties located in the north-central part of the state

31. Based on your knowledge of geography, why do you assume there is a large population area located in the southwestern part of the state?

- A. The Tennessee River and Memphis are located in this area.
- B. The Mississippi River begins near that location of the state.
- C. Memphis is located there and is the state capital.
- D. The Mississippi River and Memphis are located in this area.

DIRECTIONS: Study the map and the passage, and read the questions. Then mark on the map the best answer(s) to each question.



The term *Balkan* is a geographical designation for the easternmost of Europe's three southern peninsulas. Two major mountain ranges dominate the peninsula: the Dinaric Alps in the west, which run parallel to the Adriatic coast, and the high Carpathian mountains in Romania. In addition, the Balkan Mountains lie east-west across Bulgaria.

The coastlines of the peninsula's southern and western countries are rugged and rocky. The landscape of the Balkan peninsula is suitable primarily for raising animals and small-scale farming. Countries such as Croatia, Romania, and Bulgaria, enjoy arable land.

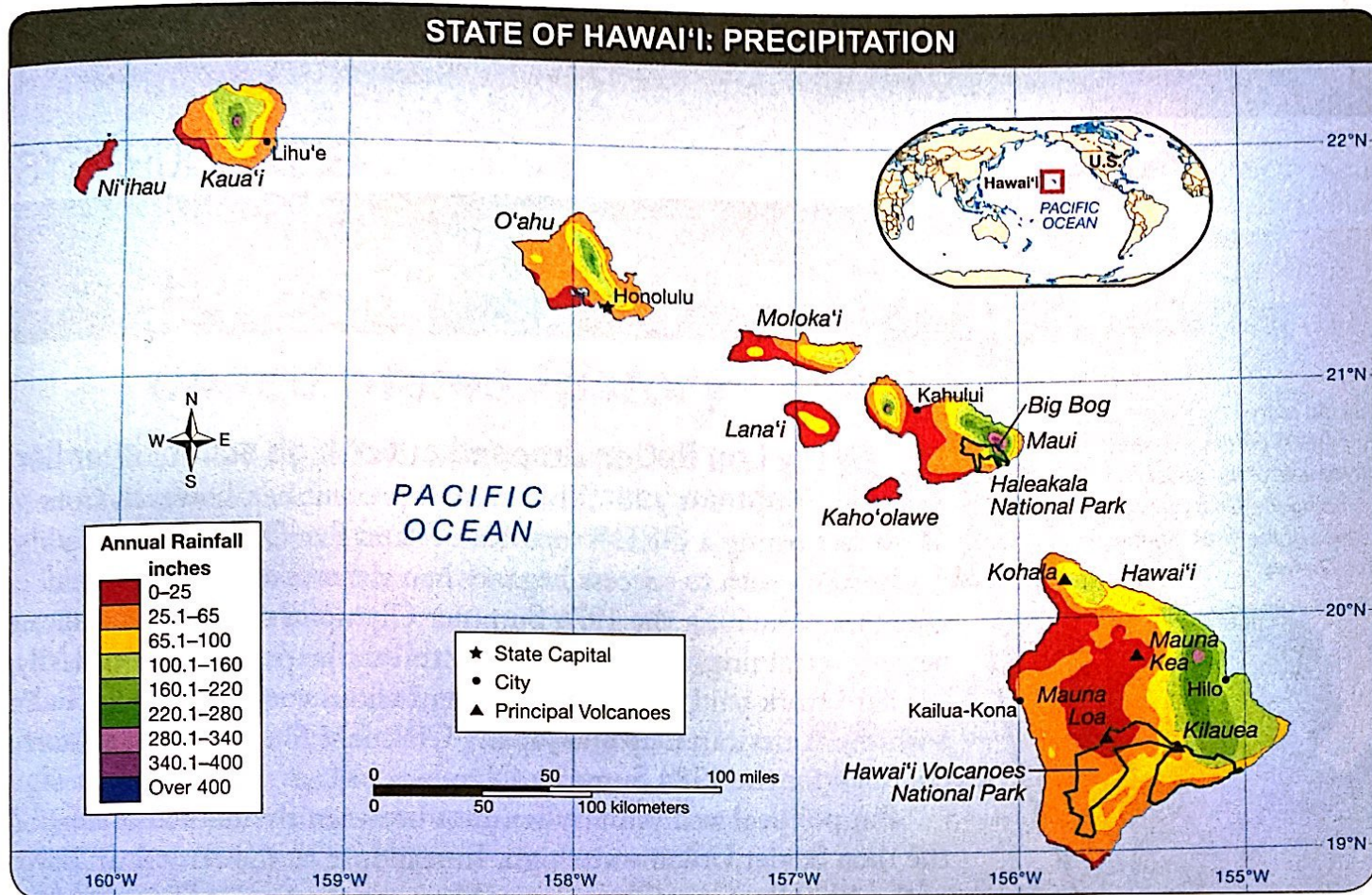
Fertile land for farming also lies along the valleys of the Danube, Sava, and Vadar rivers, as well as part of the Aegean coast. Elsewhere, land cultivation is mostly unsuccessful because of the mountains, hot summers, and poor soils, although grapes and olives thrive in certain areas.

Energy resources are scarce, except in Kosovo, where citizens mine coal and other mineral deposits. Mining of coal also contributes to the economies of Serbia, Romania, Bosnia and Herzegovina, and Bulgaria. Romania also is home to some oil deposits. Although natural gas deposits are scarce throughout the region, the Balkan countries have widely accepted renewable energy sources such as wind and hydropower.

32. On the map, place a circle around the name of the city that lies on the Black Sea.
33. Which Balkan country has the most northwestern location? Put a check mark next to that country's name.
34. On the map, underline the names of the Balkan countries whose industries include mining.
35. On the map, place an X next to the names of the countries that formed the former Yugoslavia.

DIRECTIONS: Study the map and the passage, read each question, then choose the **best** answer.

STATE OF HAWAII: PRECIPITATION



The state of Hawai'i is a chain of volcanic islands located in the Pacific Ocean. The state's rainfall pattern is quite diverse. Average annual precipitation ranges from 8 inches near the summits of Mauna Loa and Mauna Kea on the Big Island to 404 inches near Big Bog on the windward slope of Haleakala National Park, Maui. In general, high average rainfall is found on the windward mountain slopes, and low rainfall prevails in leeward lowlands and on the upper slopes of the highest mountains.

Surprisingly, perhaps, the highest peaks also receive several inches of snow. In general, the wetter season is winter and the dryer season is summer. There are exceptions, such as those areas of the Big Island of Hawai'i that have a summer rainfall maximum caused by land and sea breeze convection.

36. Based on the map and the passage, which of the following cities has the lowest annual precipitation?

- A. Hilo
- B. Honolulu
- C. Kahului
- D. Lihu'e

37. Based on the map and the passage, which of the following cities has the greatest annual precipitation?

- A. Hilo
- B. Honolulu
- C. Kahului
- D. Lihu'e

38. Which Hawai'ian Islands have the lowest annual precipitation?

- A. Big Island of Hawai'i and Lana'i
- B. Kaho'olawe and Moloka'i
- C. Moloka'i and Ni'ihau
- D. Lana'i, Kaho'olawe, and Ni'ihau

39. What is the approximate distance between Honolulu and the Haleakala National Park?

- A. approximately 50 miles
- B. approximately 125 miles
- C. approximately 200 miles
- D. approximately 250 miles